

1.0 GENERAL SPECIFICATION

Air to Water Heat Pump. Unit is included with compressor , evaporator, condenser and electrical control panel. Refrigerant is environmental friendly R-134A. Heat Pump can produce 70°C maximum hot water temperature.

2.0 PERFORMANCE

The unit have C.O.P. not less than 4.0 at 30 °C, 65 %RH ambient air and 45 °C , 55 °C inlet and outlet hot water.

3.0 EQUIPMENT SPECIFICATION

3.1 COMPRESSOR

Hermetic Scroll type compressor , suitable for high temperature operation with environmental friendly R134A refrigerant.

**Copeland**
brand products

3.2 CONDENSER

Condenser is plate heat exchanger , SUS 316 Stainless steel , Copper welding. Refrigerant side is tested at pressure 500 psig and water side is tested at pressure 300 psig.



Plate Heat Exchanger

3.3 EVAPORATOR

Evaporator is copper tube and aluminium blue fin with galvanized end plates.



Evaporator Coil

3.4 REFRIGERANT EQUIPMENTS

Refrigerant equipment are included

- Thermal Expansion Valves
- Filter Dryer
- Service Valve

3.5 CABINET

Heat pump cabinet is enameled galvanized steel thickness X.X mm. Designed for both indoor and outdoor installation.

3.6 INSULATION

EPDM Close Cell Insulation. Excellent insulator with low thermal conductivity.

3.7 PROTECTION FUNCTION

- High Pressure Safety Switch.
- Low Pressure Safety Switch.
- Electrical Phases & Voltage Protection.
- Water Flow Switch Protection (Dry Contact).
- Over Current Compressor Protection.
- Time Delay for Compressor Protection.
- Auto-Restart Mode



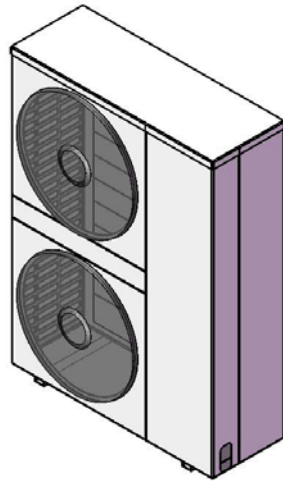
AIR SOURCE HEAT PUMP - ALC25KW

TECHNICAL DATA OF AIR SOURCE HEAT PUMP

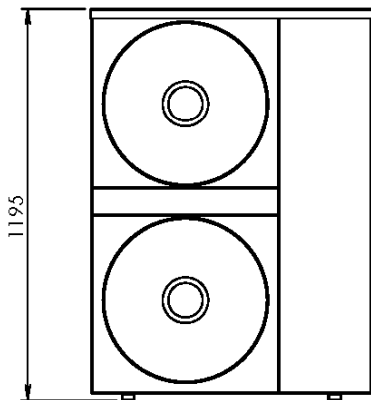
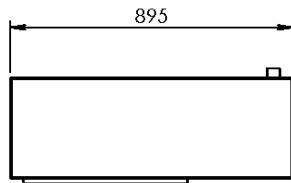
MODEL		ALC25kW
HEATING CAPACITY	kW.	24.7
COOLING CAPACITY	kW. (Btu/h)	19.7(67,219)
HOT WATER RECOVERY RATE	Lph	2,127
WATER INLET TEMP.	°C	45
WATER OUTLET TEMP.		55
MAX. HOT WATER OUTLET TEMP.		70
AIR FLOW RATE	cfm	2,000
COMPRESSOR	Type	SCROLL
	QT.	1
	Refrigerant	R-134a
ELECTRICAL	V/Ph/Hz	380/3/50
COP		4.3
POWER AT RECOVERY RATE (Included all electrical parts)	kW	5.7
RLA (@ RECOVERY RATE)	A	11.8
FLA		15.9
CASING MATERIAL		ENAMELED GALVANIZED STEEL
DIMENSION (W X D X H)	mm	325x895x1195
NET WEIGHT (approx.)	kg	135
WATER INLET	Inch	1"
WATER OUTLET		1"
CONDENSATED DRAIN		3/4"

M & E TEAM WORK CO.,LTD.

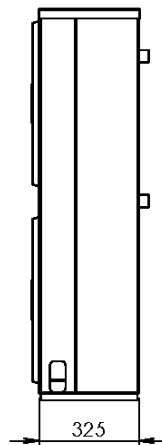
HEAD OFFICE : 133/128 RATTANATHIBET RD. BANGKRASAO MUANG NONTHABURI NONTHABURI 11000
TEL:(66)2-106-2922 FAX:(66)2-106-2944, E-MAIL : meteamwork128@gmail.com



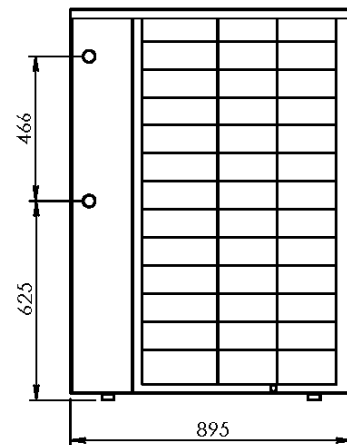
DIMENSION



FRONT VIEW



SIDE VIEW



BACK VIEW